

A vertical decorative border on the left side of the page, featuring a variety of colorful flowers including purple, red, yellow, and pink blossoms on green stems with leaves.

FEIERABEND ASSOCIATION FOR MUSIC EDUCATION

SPRING 2025





John Feierabend & FAME

PHILOSOPHY

All people have the potential to become tuneful, beatful, and artful. Skills in these areas should be developed as early as possible in childhood. Developing these skills will contribute to a society of musical people who seek opportunities to sing together, dance together, and who are moved by expressive music.

VISION

Musical Childhood, Musical Adults, Joyful Community

CORE VALUES and BELIEFS

Education – Utilizing the Feierabend philosophy of music education to foster the growth of music educators across the world.

Community – Sharing in the joy of music making and treasuring time together while we support, grow with, and learn from one another.



COURSES

SPRING 2025

01

Certification Courses

Full 20+ hour teacher certification courses

02

Workshops, Conference Sessions & FAME Electives

Overviews and comprehensive explorations on curricular-specific topics

LOOK OUT FOR THESE ICONS WHEN REGISTERING FOR A CLASS!



VIRTUAL



IN PERSON



HYBRID



01

Certification Courses



First Steps in Music
Wallingford, VT

with **Betsy Greene**
3 graduate credits/PD hours equivalent

Hybrid Summer 2025
Online: May 27, June 3, June 10, June 17
6:00-8:15 pm EST
In-person: July 21-23, 2025
8:00 am-4:00 pm

Additional Information
<https://music-comp.org/professional-development>

Music-COMP

First Steps in Music

24 Instructional Hours at Wallingford, VT
3 Graduate Credits / PD Hours Equivalent
Moderated by FAME-endorsed Teacher Trainer: Betsy Greene
Online / In Person options available



ONLINE: MAY 27, JUNE 3, 10 and 17, 2025
IN PERSON: JULY 21 - 23, 2025

\$1,350 - \$1,780
[LINK TO REGISTER](#)



Conversational Solfege
Levels 1 and 2
Woodward Elem. Delaware, OH

FAME Teacher Trainer
Andrew Himelick

24 Instructional Hours
June 2025
June 2 to June 5
9 a.m. to 4 p.m.

Register here
www.felersabendmusic.org/events/

Conversational Solfege Levels 1 & 2

24 Instructional Hours at Delaware, OH
FAME-endorsed Teacher Trainer: Andrew Himelick



JUNE 2 - JUNE 5, 2025

\$450
[LINK TO REGISTER](#)



Conversational Solfege
Levels 1 and 2
Anderson University - IN

FAME Endorsed Teacher Trainer
Andrew Himelick

30 Instructional Hrs
June 2025
June 16 - June 20
8:30 a.m. to 3:30 p.m.

www.anderson.edu/academics/summer-studies/music-education/
Contact: mbuade@anderson.edu

Conversational Solfege Levels 1 & 2 Certification Course

30 Instructional Hours at Anderson University, IN
FAME-endorsed Teacher Trainer: Andy Himelick



JUNE 16 - 20, 2025
8 AM - 3:30 PM EST

\$800 / \$1,050
[LINK TO REGISTER](#)



First Steps in Music
River Forest, IL

FAME-endorsed Teacher Trainer
Emily Woock

24 Instructional Hours
June 24-27, 2025
Concordia University,
Chicago

Link to Registration
and Additional Information
[Link to Registration and Additional Information](#)

First Steps in Music

24 Instructional Hours at Concordia University - Chicago, IL
FAME-endorsed Teacher Trainer: Emily Woock



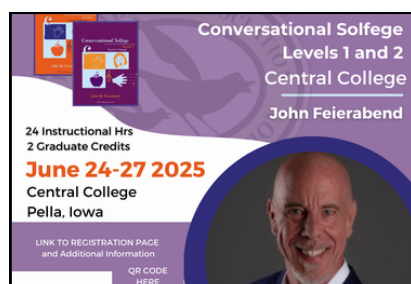
JUNE 24 - 27, 2025

\$350
[LINK TO REGISTER](#)



01

Certification Courses



Conversational Solfege Levels 1 & 2 Certification Course

24 Instructional Hours at Central College, IA

2 Graduate Credits

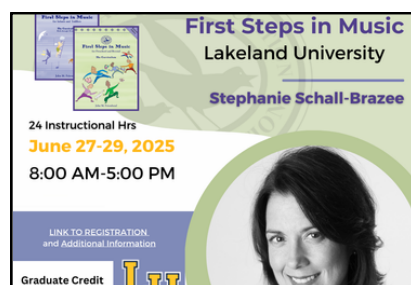
FAME-endorsed Teacher Trainer: John Feierabend

JUNE 24 - 27, 2025



\$450

[LINK TO REGISTER](#)



First Steps in Music Certification Course

24 Instructional Hours at Lakeland University, WI

Graduate Credits Available

FAME-endorsed Teacher Trainer: Stephanie Schall-Brazee

JUNE 27 - 29, 2025



[LINK TO REGISTER](#)



First Steps in Music Certification Course

24 Instructional Hours at Slippery Rock University, PA

FAME-endorsed Teacher Trainer: Leslie Weaver

Hybrid (In-person with virtual component)

JUNE 29 - JULY 3, 2025

CONTACT INFO: leslieweaver515@gmail.com



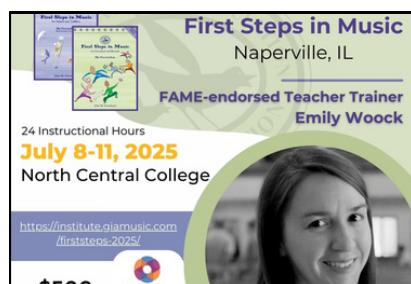
\$450

[LINK TO REGISTER](#)



01

Certification Courses



First Steps in Music @ GIA Summer Institute Certification Course

24 Instructional Hours at North Central College, IL
FAME-endorsed Teacher Trainer: Emily Woock



\$500

JULY 8 - 11, 2025

[LINK TO REGISTER](https://institute.giamusic.com/firststeps-2025/)



Conversational Solfege Levels 1 & 2 @ GIA Summer Institute Certification Course

24 Instructional Hours at North Central College, IL
FAME-endorsed Teacher Trainer: Emily Maurek



\$500

JULY 8 - 11, 2025

[LINK TO REGISTER](https://institute.giamusic.com/conversational-2025/)



Conversational Solfege Levels 1 & 2

24 Instructional Hours at Gordon College, MA
2 Graduate Credits
FAME-endorsed Teacher Trainer: John Feierabend



\$980 / \$1,275

JULY 14 - 17, 2025

[LINK TO REGISTER](#)



First Steps in Music

24 Instructional Hours at Wilson Community Center, AZ
2 Graduate Credits
FAME-endorsed Teacher Trainer: John Crever



\$450

JULY 14 - 17, 2025

[LINK TO REGISTER](http://www.feierabendmusic.org/credits)



Certification Courses



Conversational Solfege Levels 1 & 2 Certification Course

24 Instructional Hours at The HARTT School of Music, CT
FAME-endorsed Teacher Trainer: Chris Powers



JULY 21 - AUG 1, 2025

[LINK TO REGISTER](#)



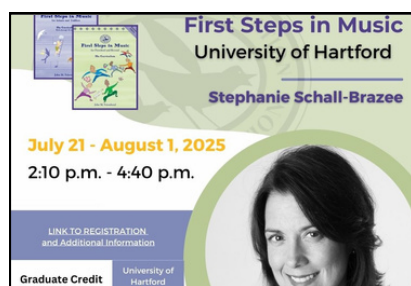
Conversational Solfege Levels Upper Levels Certification Course

24 Instructional Hours at The Hartt School of Music, CT
FAME-endorsed Teacher Trainer: Chris Powers



JULY 21 - AUG 1, 2025

[LINK TO REGISTER](#)



First Steps in Music Certification Course

24 Instructional Hours at The Hartt School of Music, CT
FAME-endorsed Teacher Trainer: Stephanie Schall - Brazee



JULY 21 - AUG 1, 2025

[LINK TO REGISTER](#)



First Steps in Music

24 Instructional Hours at Wayne State University
FAME-endorsed Teacher Trainer: Stephanie Schall-Brazee



AUGUST 4 - 6, 2025

\$500

[LINK TO REGISTER](#)



02

Workshops, Conference Sessions & FAME Electives



NAFME Eastern Division | Sing in Parts: Pedagogy Ideas for Beginning Part Singing

FAME-endorsed Teacher Trainer: Lillie Feierabend



APR 24, 2025

[LINK TO REGISTER](#)



NAFME Eastern Division | First Steps in Music: Vocal Development & Movement Development

FAME-endorsed Teacher Trainer: John Feierabend



APR 24 - 27, 2025

[LINK TO REGISTER](#)



NAFME Eastern Division | Who's Afraid of Improvisation?

FAME-endorsed Teacher Trainer: Lillie Feierabend



APR 25, 2025

[LINK TO REGISTER](#)



NAFME Eastern Division | The 12 Steps of Rhythmic Literacy Using Conversation Solfege

FAME-endorsed Teacher Trainer: Chris Ann Powers



APR 25, 2025

[LINK TO REGISTER](#)



Workshops, Conference Sessions & FAME Electives



First Steps in Music for Infants and Toddlers

FAME Workshop

FAME-endorsed Teacher Trainers: Connie Greenwood and Bron Lawson



Fridays

Apr 25-May 16, 2025

7--10PM ET

\$200

[LINK TO REGISTER](https://tinyurl.com/EMMB2024)



Folk Song and Dance Around the World

FAME-endorsed Teacher Trainer: Lillie Feierabend

Anderson University, Anderson IN



June 16-19, 2025

5:00pm -- 8:45PM

[LINK TO REGISTER](#)



World Folk Song and Dance

FAME-endorsed Teacher Trainer: Lillie Feierabend

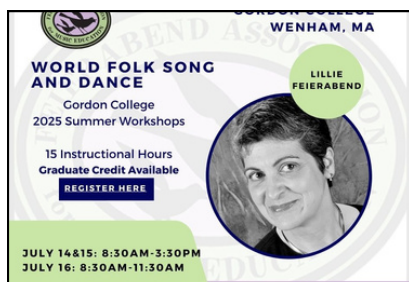
University of Hartford, Hartt School of Music, Hartford, CT



July 7-11, 2025

9:00am -- 4PM

[LINK TO REGISTER](#)



World Folk Song and Dance

FAME-endorsed Teacher Trainers: Lillie Feierabend

15 Instructional Hours | Graduate Credit Available

Gordon College, Wenham, MA



July 14 - 15 | 8:30am - 3:30pm

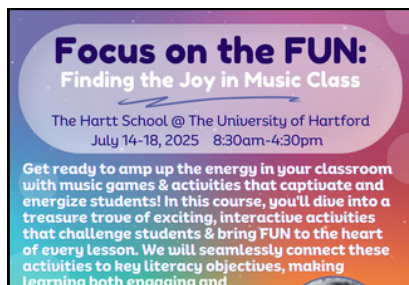
July 16 | 8:30am - 11:30am

[LINK TO REGISTER](#)



02

Workshops, Conference Sessions & FAME Electives



Focus on the FUN: Finding the Joy in Music Class

FAME-endorsed Teacher Trainers: Chris Ann Powers

3 Graduate Credit Available

The Hartt School of Music, Hartford, CT



Jul 14 - 18, 2025

8:30am - 4:30pm

\$200

[LINK TO REGISTER](#)



Musical Bridges to the Community

FAME-endorsed Teacher Trainers: Lillie Feierabend

15 Instructional Hours | Graduate Credit Available

Gordon College, Wenham, MA



July 16 | 12:30pm - 3:30pm

July 17 - 18 | 8:30am - 3:30pm

[LINK TO REGISTER](#)

Events subject to change

For more information, visit feierabendmusic.org/events



FAME

Endorsed Teacher Trainers



John Crever



Emily Maurek



Lillie Feierabend



Chris Anne Powers



Betsy Greene



David Rankine



Connie Greenwood



Stephanie Schall Brazee



Andrew Himelick



Leslie Weaver



Bron Lawson



Emily Woock

HAVE A QUESTION?

We are great listeners!

✉ executive-director@feierabendmusic.org

🌐 www.feierabendmusic.org/events



FEIERABEND ASSOCIATION FOR MUSIC EDUCATION

